

QUAY NOTES

- a newsletter for Port of Tilbury staff -

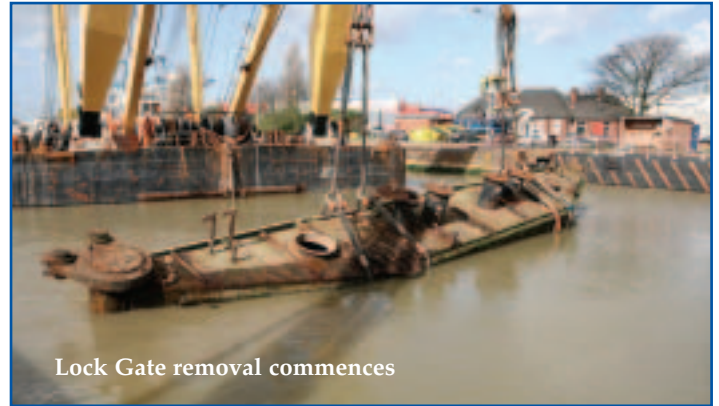
Out with old in with the new

A major project involving the removal and replacement of the middle gates of the lock took place at the beginning of March.

The gates were originally installed in 1926 when the new lock location first opened and have been removed and replaced at different intervals since that time. The gates require refurbishment and repainting to preserve the integrity of the steel work.

The replacement gates had been refurbished at Ravesteins yard in Holland and arrived at Tilbury by barge. The operation took seven days to complete and began with the middle set of gates being removed using a 400 tonne floating crane. The refurbished gates were installed using the same crane. The individual gates weigh 365 tonnes each, but allowances were made for the silt that had accumulated in the gates over the past 22 years.

The gates that were removed will be refurbished to replace the outer gates in 2008 and the outer gates that are removed will

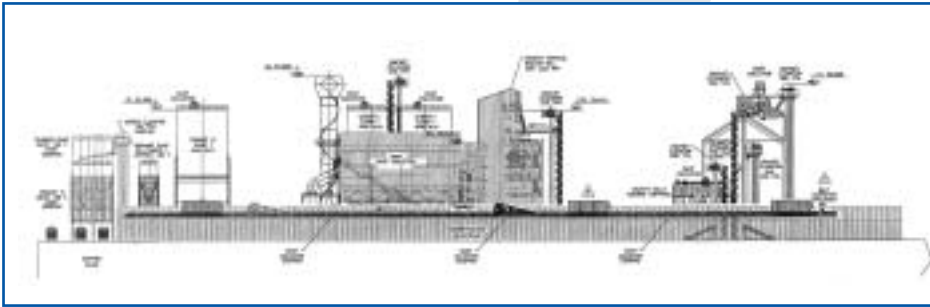


Lock Gate removal commences

replace the inner gates in 2010, after refurbishment. The removed inner gates will then be refurbished and used as spare in 2012.

All of the work was undertaken between shipping with only one ship being slightly delayed on the final day of the operation.

CEMEX GETS APPROVAL FOR NEW GRINDING AND BLENDING FACILITY



A presentation to celebrate the approval for a new grinding and blending facility took place at the Port of Tilbury on 6th February.

The event was very high profile with the Mayor of Thurrock Joycelyn Redcell, Charles Hammond, Chief Executive of Forth Ports and Cemex President, Ignacio Ortiz in attendance. Other guests included Niall Lyndsey of Thurrock Thames Gateway and members of Port of Tilbury management.

The new £27 million Tilbury facility is an investment in the future built environment, which at the same time re-uses materials to produce blended cement, reducing emissions in the process.

Based on the reduced clinker content, emissions of CO₂ are reduced by 50% for each tonne of blended cement produced. At Tilbury, this would result in a saving of 600,000 tonnes per annum, the equivalent to the annual CO₂ emissions of more than 240,000 cars.



The new 1.2 million tonne facility will be well placed to help meet demand for the cement required for the sustainable construction challenges of the London 2012 Olympic Games. It has also been welcomed by Thurrock Council as an integral part of the regeneration efforts to transform the area and support London's expanding population.

THURROCK BUSINESS AWARDS 2007

The Port of Tilbury were sponsors for the 'Spirit of Ingenuity' category at the Thurrock Business Awards again this year.

The judging panel were Peter Ward, Senior Asset Manager for Grain and Bulks, Lynda Viccars Cruise and Marine Co-ordinator and Caroline Gerrard, Port Relations Officer.

The panel completed field visits with each of the nine finalists and choose three equal winners based on the companies application packs and evidence of 'Spirit of Ingenuity' at the field visit.

The three winners were Let itB, a residential letting agency, Item Consulting and Services, a travel consultancy and Coryton Management Systems who procure chemicals for the cleaning industry and also run a logistics company and recruitment agency. All three were well deserving winners and were able to demonstrate how they have developed their business using innovative ideas and implemented them through clear business objectives.

The awards ceremony took place on Friday 23rd March and winners were each presented with their award at the Oscar's style ceremony.



CUSTOMER FOCUS

Stema moves operation in Port

Stema Shipping (UK), one of the Port's largest bulk terminal operators has moved site.

The move from 7/8 berth to 1 berth, follows the signing of a new contract at the end of last year and took just three weeks to complete. Stema are expecting their throughput of aggregates to rise to nearly 1 million tonnes per annum facilitated by the new location. The move is in conjunction with the plans for the new Cemex development, due to be completed in 2008.



Stema is a leading exporter of Norwegian aggregates and rock armour. They operate their own coastal quarries in Europe and has the only European quarry dedicated to the production of rock armour (Larvik). The group also owns a fleet of self-discharging vessels and five aggregate terminals, which includes the Tilbury terminal. Stema Shipping (UK) has been a longstanding customer of the Port for over 10 years.

James Lathams celebrates 250 year anniversary



James Lathams, timber importer and distributor in the Port, celebrated their 250th anniversary at a drinks reception in February.

who were invited to attend the reception and Chris Sutton, Director for James Lathams went personally to a site in the Peak District, Derbyshire to view the planting of the new trees.

James Lathams have been a customer of the Port for over 10 years and their cargo arrives on Far East, Grimaldi and Baltic vessels.

A tree was planted for each of the 250 guests



Recycling plant planned for Port

Plans for a new recycling facility have been agreed between the Port of Tilbury and Nordic Recycling, subject to planning permission.

The plant will be used for recycling mixed dry materials including plastics, paper and glass. State of the art machinery will be installed to sort, bale and pack the materials which will be containerised and shipped to the Far East.

The 15-year contract will include the lease of 34 shed and the surrounding yard area. In addition to the installation of the equipment, Nordic will be constructing a new floor in the shed, providing additional cladding and doors, upgrading the electricity supply and building its own weighbridge and office facilities.

Nordic Recycling was established in 1995 and is one of the fastest growing waste management companies in the UK. Its principal aim is to challenge existing waste handling methods and use improved techniques to maximise the removal of recyclables to benefit the environment.

Storm causes Port to close operations

The Port had to suspend operations on 18th January due to severe weather conditions that affected major road and rail networks across the country.

The winds that reached a speed of up to 80 mph, caused the Port to refuse entry to high sided vehicles arriving for collections and all outside operations in the Port were suspended.

Two containers were lifted in to the water by the high winds.



Welcome Kraftca to the Port

The vessel m/v Kraftca came to Tilbury in January due to the disrupted sailing schedules over the festive period. It was the vessels first visit to Tilbury for the shipping line, Transfennica.

The vessel is one of the larger vessels belonging to the shipping line and could find itself on the schedule if volumes grow in the future.



m/v Kraftca

PERSONNEL NEWS

CERTIFICATE PRESENTATION

A certificate presentation morning took place on 1 March 2007 with Perry Glading. Those attending the presentations and receiving certificates were:

ECDL (European Computer Driving Licence)

Josie Abela

IOSH Managing Safely Certificate

Peter Smith Chris Nadin

Robert Moore Neil Ives

Neil Davis

IMDG (International Maritime Dangerous Goods)

James Bills Chas Clout

Steve Brown John Green

Gerrard Saunders Neil Ives

Gary Vincent David Lawson

Josie Abela Robert Moore

Robert Hallett Clive Fielder

Danny Pealing

ILM Team Leader

James Bills Tracey Dillaway

Kevin West

RECENT ACHIEVERS

NEBOSH National Diploma (level 6) in Occupational Safety & Health

Neil Stroud, SHE Dept

IOSH Managing Safely Certificate

Brian Murphy, Grain

Following Project Presentations to Management by the ILM Level 3 Group, the following staff successfully completed their year long Programme:

Gary Goldsmith - Port Eng.

Julie McGowan - EDC

Sarah Bull - EDC

Lynda Viccars - Cruise & Marine

Stuart Binns - Conventional

Stuart Miller - Central Plant Eng.

Mark Cudbill - Training

(All will be awarded their certificates at the next presentation date)

GENERAL

Training Department has been given 2 year NVQ Centre Approval by the governing body EAL for Port Operations, following completion of an Application, Audit of NVQ process and a External Verifier visit during March 2007.



Health and Safety Forum 2007

The second annual Safety, Health and Environment Forum was held at the London Cruise Terminal on the 1st of March.

The Forum was chaired by the Managing Director, Perry Glading and was attended by fifty six members of both Port management and health and safety representatives from all Assets and support service departments. The main presentation was conducted by the Safety, Health and Environment (SHE) Manager, Steve Lucas who provided a full review of 2006 including accident statistics and incidence rates.

The continued reduction targets set by the Group for accidents were achieved by the Port of Tilbury with a 29.73% reduction in all accidents and a 12.5% reduction in notifiable accidents.

Delegates were advised that the second British Safety Council 5 Star Audit will take place in June 2007 with the Port's main target is to improve on the 5 Star Award of 96.55% achieved in 2005, for Health and Safety Risk Management Systems.

A presentation was conducted by the Conventional Asset Health and Safety Representatives; Michael Shaw, Dave Pace, Nigel Foster and Andy Green which highlighted the importance and the positive impact of Trade Unions Health and Safety Representatives.

Delegates were informed of the National Launch of the Safer Ports Initiative 2 (SPI 2) in May 2006. The Regional Launch for the Thames and South East Region will be hosted by POTLL at the London Cruise Terminal.

Significant legislation was also discussed and included the Regulatory Reform (Fire Safety) Order 2005. Fire Risk Assessments must now be reviewed on an annual basis and these must include multi-occupied premises (Tenants). The Company has completed a review of its existing Fire Risk Assessments and conducted additional assessments to meet the requirements of the Order.

The presentation focused on the Company accreditation to BS EN ISO14001 : 2004, the International Standard for Environmental Management Systems (EMS). Enterprise Distribution Centre achieved accreditation in October 2006, joining the Finnish Terminal, Short Sea Container Terminal and UPM Wood Shed.

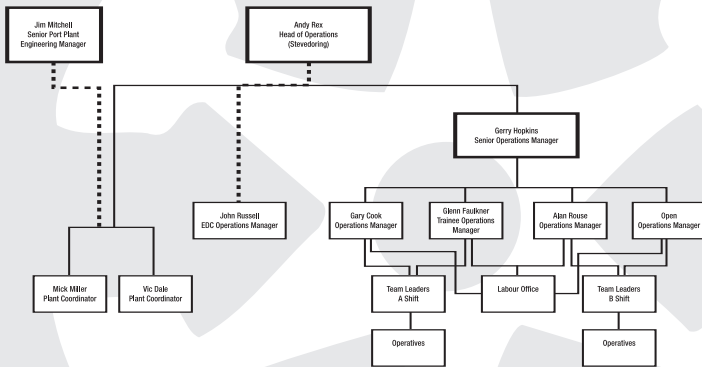
The programme for 2007 and 2008 includes Conventional and Grain and Bulks Terminals Initial Assessment and accreditation. Objectives and targets for 2007 within the accreditation include a wind turbine project, a renewable energy study and an assessment of the Company's carbon emissions.

The Port Facility Security Officer (PFSO) Tony Catling, briefed delegates on both the current and future implications of the International Ship and Port Facility Security (ISPS) Code.

Perry Glading concluded the Forum with a summary which included eight proposed targets for 2007 and 2008 all of which will be taken forward into the company continual improvement plan, followed by a question and feedback session.

NEWS NEWS NEWS

Port of Tilbury London Ltd Operations (Stevedoring)



Head of Operations - Andy Rex has been appointed as the new Head of Operations (Stevedoring) for the Port.



It is a new multi asset role and his responsibilities will include the organisation and provision of shipside stevedoring services across the Port, excluding Grain and Bulks and the Short Sea Container Terminal.

The organisational chart illustrates how Andy's new role will fit in the wider Port structure.

The Port of Tilbury was a finalist in the prestigious 29th Arts and Business Awards that took place in March at the Hayward Gallery on the South Bank in London.

The Port was up against companies such as Coca Cola, Clydesdale Bank and BAA Edinburgh in the Arts and Business Community category. The category prize went to BAA Edinburgh and Grid Iron.

Arts and Business are a not for profit organisation that helps companies support the arts and encourage the arts to inspire business people by providing funding for specific projects throughout the year.



The Port worked in conjunction with Thurrock Council Arts Department on the project that focused on the history of the Port from when it was opened in

1886 to the opening of the cruise terminal in 1930.

A second 'Remember Us' is planned for the summer 2007 and will focus on the next 40 years, including a piece on the Empire Windrush vessel that arrived in 1948 bringing the first immigrants to the UK from the West Indies.

The awards evening was attended by Caroline Gerrard, PR Officer for the Port, Cllr Gareth Davies, Mary-Ann Connolly and Mark Allinson from Thurrock Council Arts and Jonathan Catton, heritage officer for the council.

Raft Building Adventure Day We need you.....

As a corporate partner of St Luke's Hospice, the port is keen to help in the fundraising events organised by the charity each year.

This year's events include a 'Raft Building Activity Day' at Grangewater, South Ockendon on Sunday 20th May.

If you are interested in being part of the Port of Tilbury team there are limited spaces available. Please contact Caroline Gerrard on ex 454 or by email for more information.



St Luke's Hospice Cash in Lieu of Christmas Cards appeal

Port employees contributed a total of £73.80 for the St Luke's Hospice cash in lieu of Christmas cards scheme in December last year.

Thank you to all those who donated and signed the card.



Thank you to everyone who donated a gift under the Christmas tree in Leslie Ford House reception. It is the second year that the Port has run this scheme and the number of presents doubled compared to 2005.

A total of 74 gifts were collected and taken to Thurrock Council support team where they were distributed to families that are victims of domestic violence. These people often don't have a roof over their heads during the festive period, let alone gifts for their children and they were extremely grateful.

Port Facility Security Officer

From 1st March, Tony Catling will become the Port facility Security Officer. This is to ensure he is the first contact for TRANSEC on ISPS issues. From 15th June 2007, Tony will also take on the role of Port Security Officer, to comply with the EU Directive 2005/65/EC.