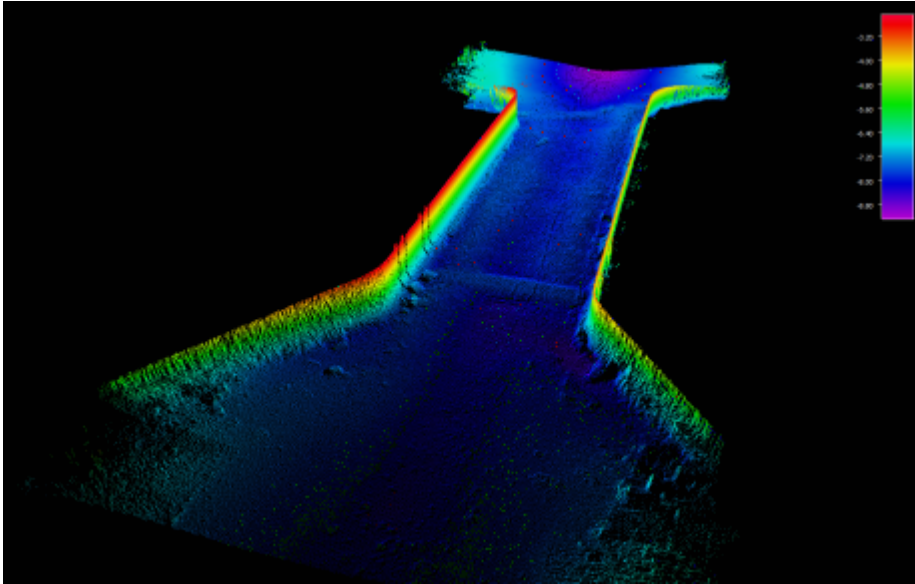


Forth Ports installs NORBIT survey system for the Forth and the Tay

Posted: 2017-11-22



Press Release

NORBIT UK's next generation multibeam survey system installed at Forth Ports

Aberdeen UK: NORBIT are proud to supply Forth Ports, one of the UK's largest port groups, with multibeam survey capability for the River Forth and the River Tay. The latest generation multibeam system - a NORBIT iWBMSH - is now in place with QPS QINSy and Qimera software, along with associated sensors and training with an investment by the port business exceeding £250k GBP.

NORBIT has also supplied the integrated iLiDAR system to Forth Ports, facilitating a truly tightly integrated survey system allowing both bathymetric and terrestrial spatial data to be simultaneously collected by a single source system.

John Fraser from NORBIT commented "We are grateful to Forth Ports for conducting a technically comprehensive evaluation period of many multibeam systems, which subsequently resulted in NORBIT technology being awarded the contract. Our system is gaining a strong reputation for data quality, and are no longer just well-known for high production quality in an easy to use small form factor."

Alan McPherson, Chief Harbour Master said: "As the statutory River Authority for the River Forth and the River Tay, it is essential that we deliver a high quality service for our river users. The installation of this NORBIT multibeam technology for our operations ensures that we are at the forefront of survey provision."

22 November 2017 - Ends -