

FIRTH OF FORTH



FORTH PORTS LIMITED



INWARD AND OUTWARD PASSAGE PLANS FOR THE FIRTH OF FORTH WITHIN THE FIRTH OF FORTH PILOTAGE AREA.

This plan has been prepared with the co-operation of personel from The Association of Forth Pilots and Forth Ports Limited.

NOT TO BE USED FOR NAVIGATION.

FOR COMPULSORY PILOTAGE AREAS SEE PILOTAGE DIRECTION NO.8.

LEGISLATION , PROCEDURES AND GUIDELINES ARE AVAILABLE ONLINE AT : [HTTP://WWW.FORTHPORTS.CO.UK/MARINE/](http://www.forthports.co.uk/marine/)

THIS IS A GENERAL PASSAGE PLAN FOR ROUTEING TO FROM VARIOUS PORTS AND TERMINALS ON THE FIRTH OF FORTH.

CONTACT INFORMATION:

⚓ FORTH NAVIGATION	VHF CHANNELS 71 (LISTENING) AND 20 (WORKING)
⚓ GRANGEMOUTH HARBOUR MASTER	VHF CHANNEL 14
⚓ LEITH HARBOUR	VHF CHANNEL 12
⚓ FORTH PILOTS & PILOT BOAT	VHF CHANNEL 72

TELEPHONE :

⚓ FORTH AND TAY NAVIGATION SERVICE	+44(0)1324 498584
⚓ LEITH HARBOUR OFFICE	+44(0)1315 558900
⚓ FORTH PILOTS	+44(0)131 552 1420

ADDRESS:

FORTH & TAY NAVIGATION SERVICE (FTNS)

GRANGEMOUTH PORT OFFICE

GRANGEMOUTH

FK3 8UE

FORTH PORTS LIMITED	Document ID FP PMSC F16_01	Authorised By MM	Original Date January 2015
Forth Passage Plan	Date Revised	Revised By	Review Due January 2018

THE PASSAGE PLAN'S CONTAINED IN THIS BOOKLET ARE MERELY A RECOMMENDATION OF THE PREFERRED ROUTE TO BE TAKEN BY VESSELS WHEN NAVIGATING IN THE INDICATED AREAS. ANY PILOT OR MASTER SHOULD EXERCISE THEIR OWN DISCRETION AND BE PREPARED TO DEPART FROM THE PASSAGE PLAN WHEN CIRCUMSTANCES DICTATE. FORTH PORTS LTD SHALL NOT BE LIABLE FOR ANY LOSSES, LIABILITIES OR DAMAGES ARISING WHETHER OR NOT DUE TO ANY FORM OF RELIANCE ON OR USAGE OF ANY PASSAGE PLAN OR DEVIATION THEREOF.

© BRITISH CROWN COPYRIGHT 2014. ALL RIGHTS RESERVED.

NOT TO BE USED FOR NAVIGATION

UK HYDROGRAPHIC OFFICE MAKES THE ACCOMPANYING PDF FORMAT IMAGES OF ADMIRALTY CHARTS 728, 733, 734, 736, 737, 741 AND 1481 AVAILABLE TO FORTH PORTS LIMITED IN ACCORDANCE WITH THE TERMS AND CONDITIONS OF LICENCE 17566. THE DATA IS SUPPLIED UNDER THE CONDITIONS SHOWN BELOW.

CONDITIONS OF RELEASE

THE SUPPLIED MATERIAL IS PROTECTED BY CROWN COPYRIGHT. NO PART OF THE SUPPLIED MATERIAL MAY BE REPRODUCED, STORED IN A RETRIEVAL SYSTEM OR TRANSMITTED IN ANY FORM OR BY ANY MEANS, ELECTRONIC, MECHANICAL, PHOTOCOPYING, RECORDING OR OTHERWISE EXCEPT AS REQUIRED TO FULFIL THE PURPOSE ABOVE.

THE COPYRIGHT MATERIAL, ITS DERIVATIVES AND ITS OUTPUTS MAY NOT TO BE SOLD OR DISTRIBUTED OR COMMERCIALY EXPLOITED IN EITHER AN ORIGINAL OR DERIVED FORM WITHOUT THE PRIOR WRITTEN PERMISSION OF THE UK HYDROGRAPHIC OFFICE.

FOR THE AVOIDANCE OF DOUBT, THE RECIPIENT SHALL NOT PLACE OR PERMIT TO BE PLACED THE SUPPLIED MATERIAL, ITS DERIVATIVES AND ITS OUTPUTS ON A COMPUTER ACCESSIBLE TO THIRD PARTIES WHETHER VIA THE INTERNET OR OTHERWISE.

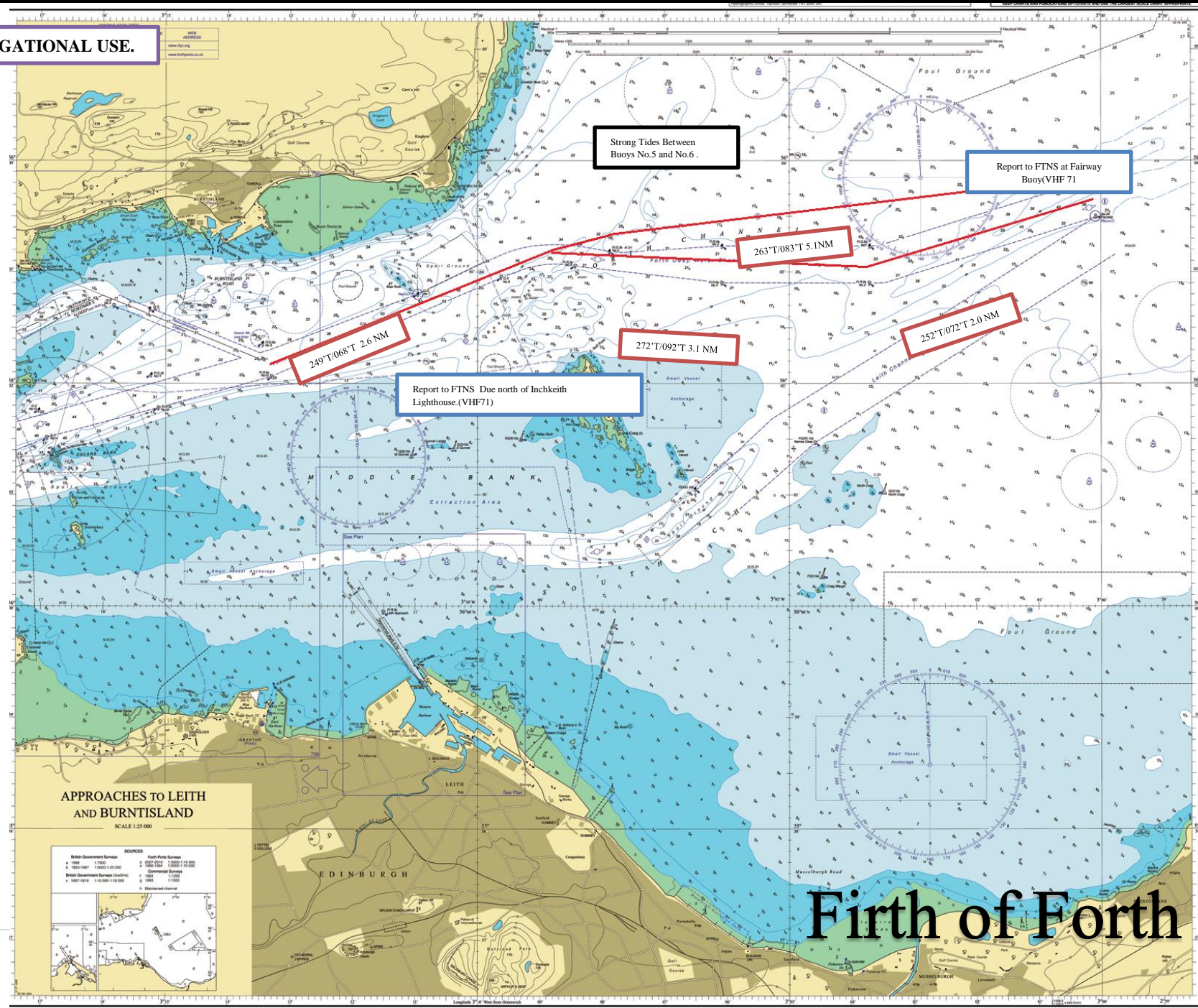
THE RELEASE OF THE SUPPLIED MATERIAL IN NO WAY IMPLIES THAT THE UK HYDROGRAPHIC OFFICE WILL SUPPLY FURTHER MATERIAL OR OFFER AN EXTENSION TO THIS LICENCE AGREEMENT.

DISCLAIMER

WHILST THE UK HYDROGRAPHIC OFFICE HAS ENDEAVOURED TO ENSURE THAT THE MATERIAL SUPPLIED IS SUITABLE FOR THE PURPOSE, IT ACCEPTS NO LIABILITY (TO THE MAXIMUM EXTENT PERMITTED BY LAW) FOR ANY DAMAGE OR LOSS OF ANY NATURE ARISING FROM ITS USE. THE MATERIAL SUPPLIED IS USED ENTIRELY AT THE RECIPIENT'S OWN RISK.

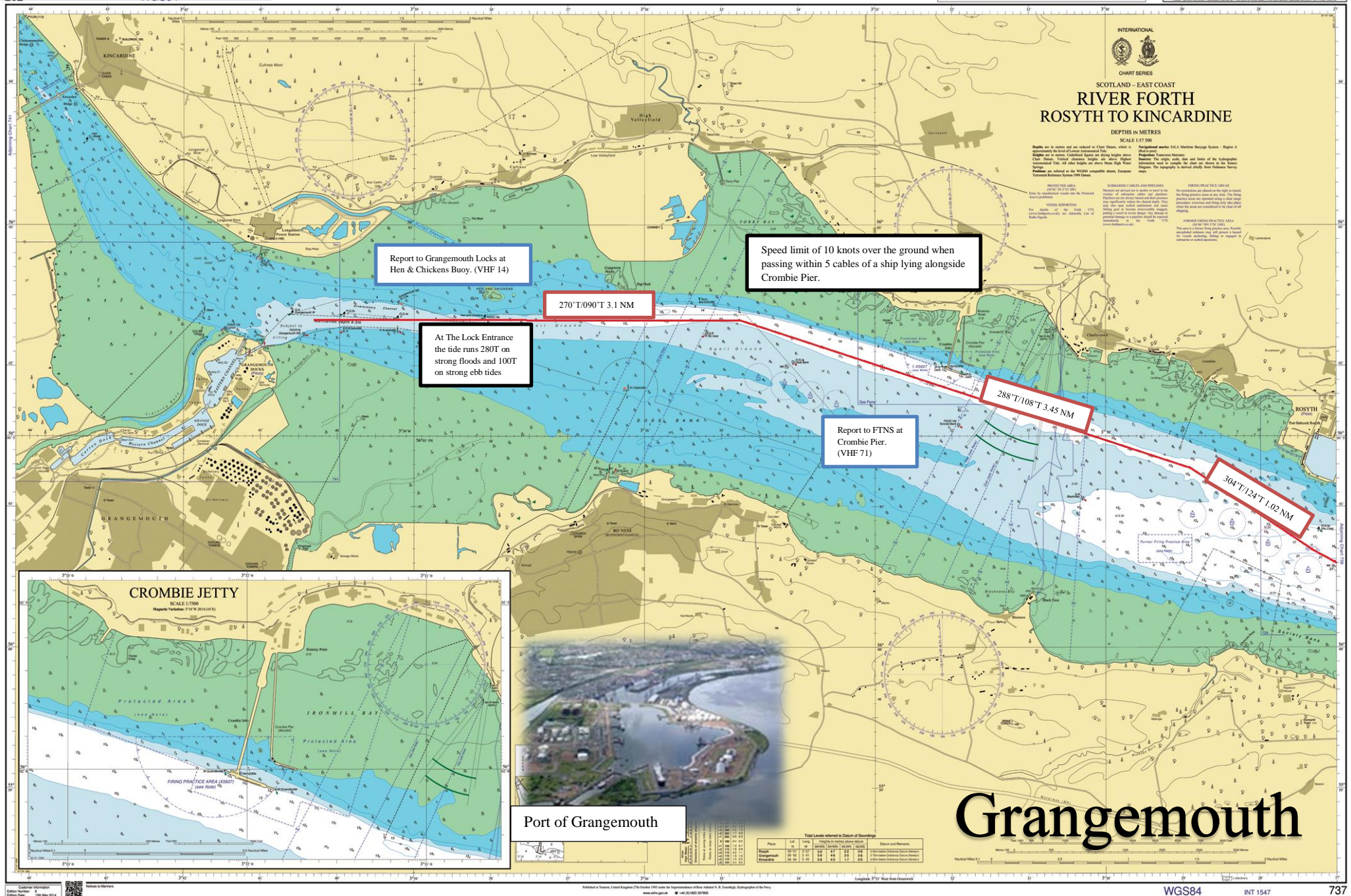
FORTH PORTS LIMITED	Document ID FP PMSC F16_01	Authorised By MM	Original Date January 2015
Forth Passage Plan	Date Revised	Revised By	Review Due January 2018

NOT FOR NAVIGATIONAL USE.



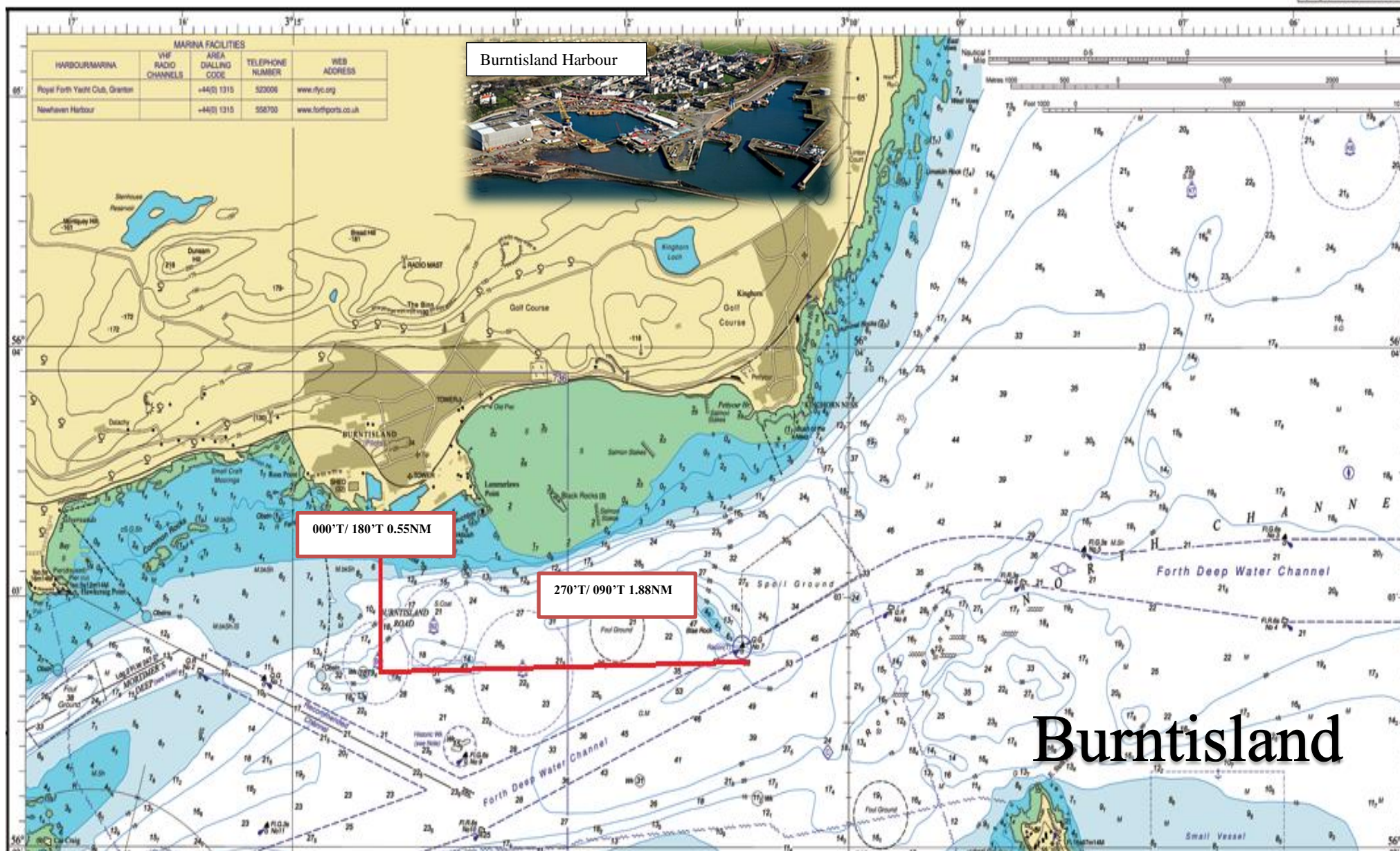
Firth of Forth

NOT FOR NAVIGATIONAL USE.



NOT FOR NAVIGATIONAL USE.

© Crown Copyright 2011. All rights and from copyright information published by the Hydrographic Office, Taunton, Somerset.



NOT FOR NAVIGATIONAL USE.

Place	Lat	Long	Height in metres above datum	Depth in metres	Notes
Burntisland	56° 02' 31" N	0° 07' 44" W	8.7	8.4	1.3 (from datum)

Place	Lat	Long	Height in metres above datum	Depth in metres	Notes
Burntisland	56° 02' 31" N	0° 07' 44" W	8.7	8.4	1.3 (from datum)



SCOTLAND - EAST COAST
FIRTH OF FORTH
 BURNTISLAND TO DALGETY BAY
 DEPTHS IN METRES

SCALE 1:7500
 Heights are in metres and are related to Chart Datum. Depths are in metres and are related to Chart Datum. The original scale and datum of the hydrographic information used to compile the chart are shown in the Source Diagram. Depths in square figures are from soundings made by the Hydrographic Survey. Depths in round figures are from soundings made by the Hydrographic Survey.



Braefoot Terminal

Strong Tides Between
 Buoys No.5 and No.6.

247°T / 067°T 1.56 NM

292°T / 112°T 1.65 NM

245°T / 063°T 0.77 NM

Route for West Jetty.

030°T / 210°T 0.64 NM

246°T / 066°T 0.68 NM

Route to be used in strong westerly winds.

252°T / 072°T

Report to FTNS at
 Oscars Lighthouse.
 (VHF 71)

3.15 NM

3.83 NM

Braefoot Terminal

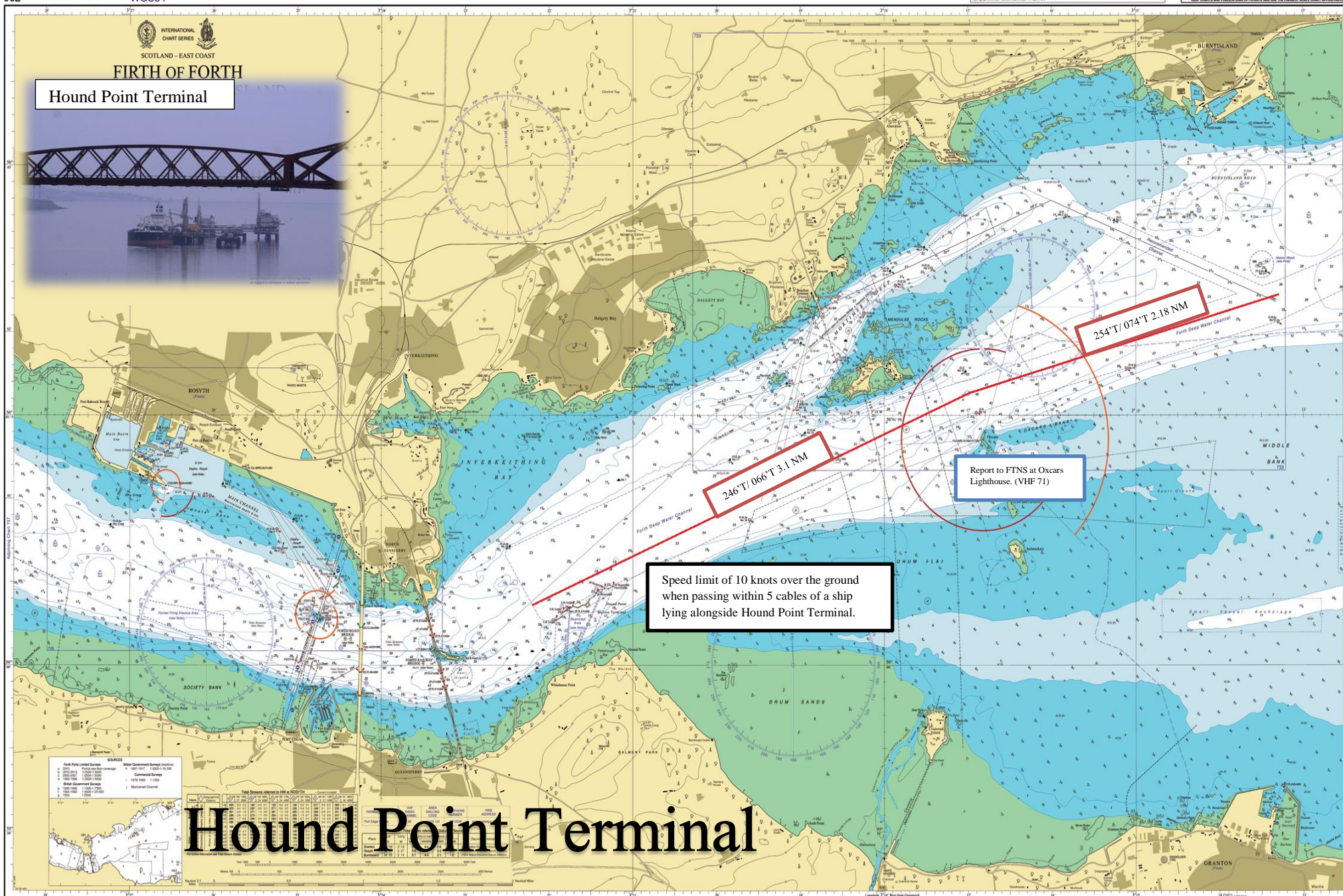
NOT FOR NAVIGATIONAL USE.



SCOTLAND - EAST COAST

FIRTH OF FORTH

Hound Point Terminal

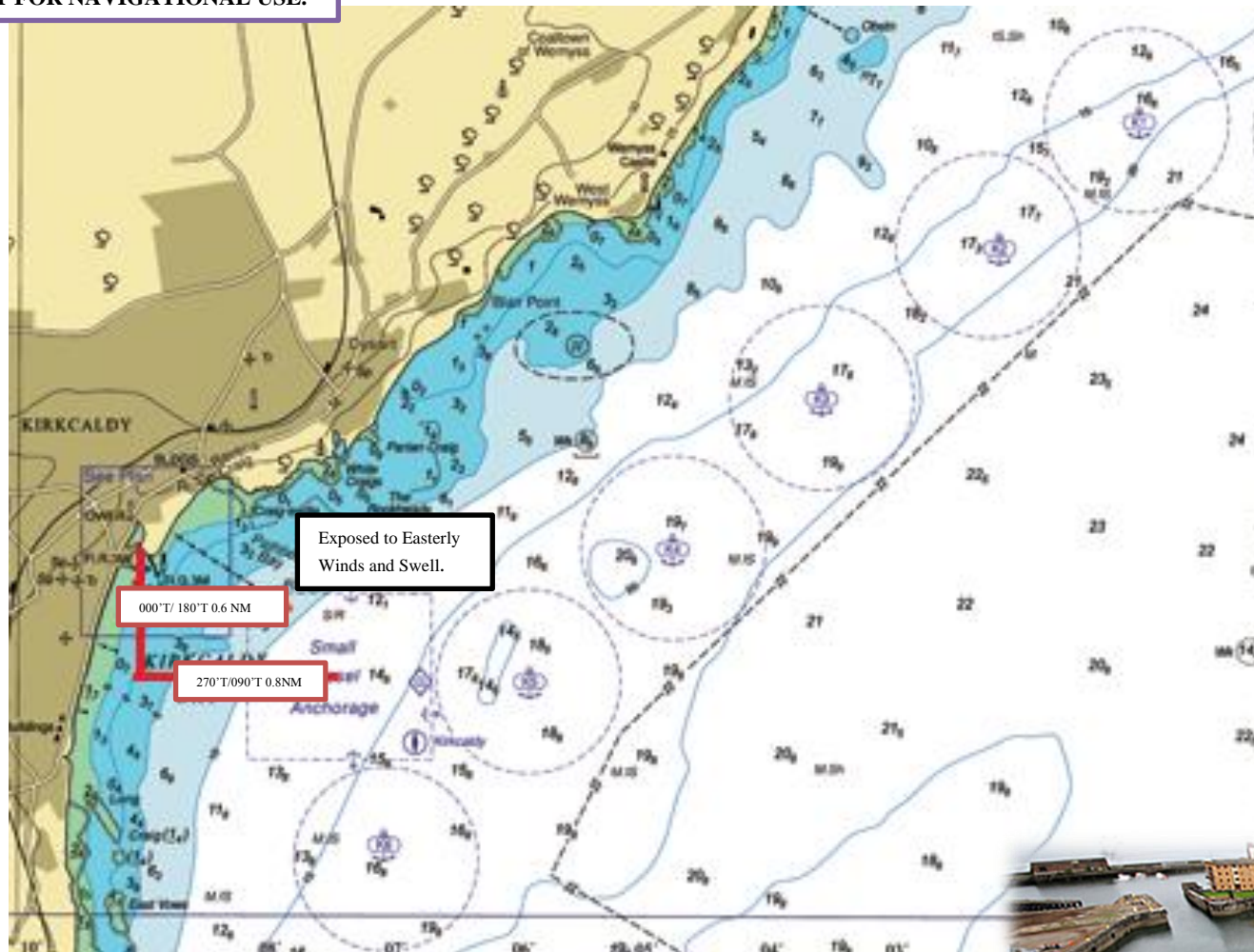


WGS84

INT 1546

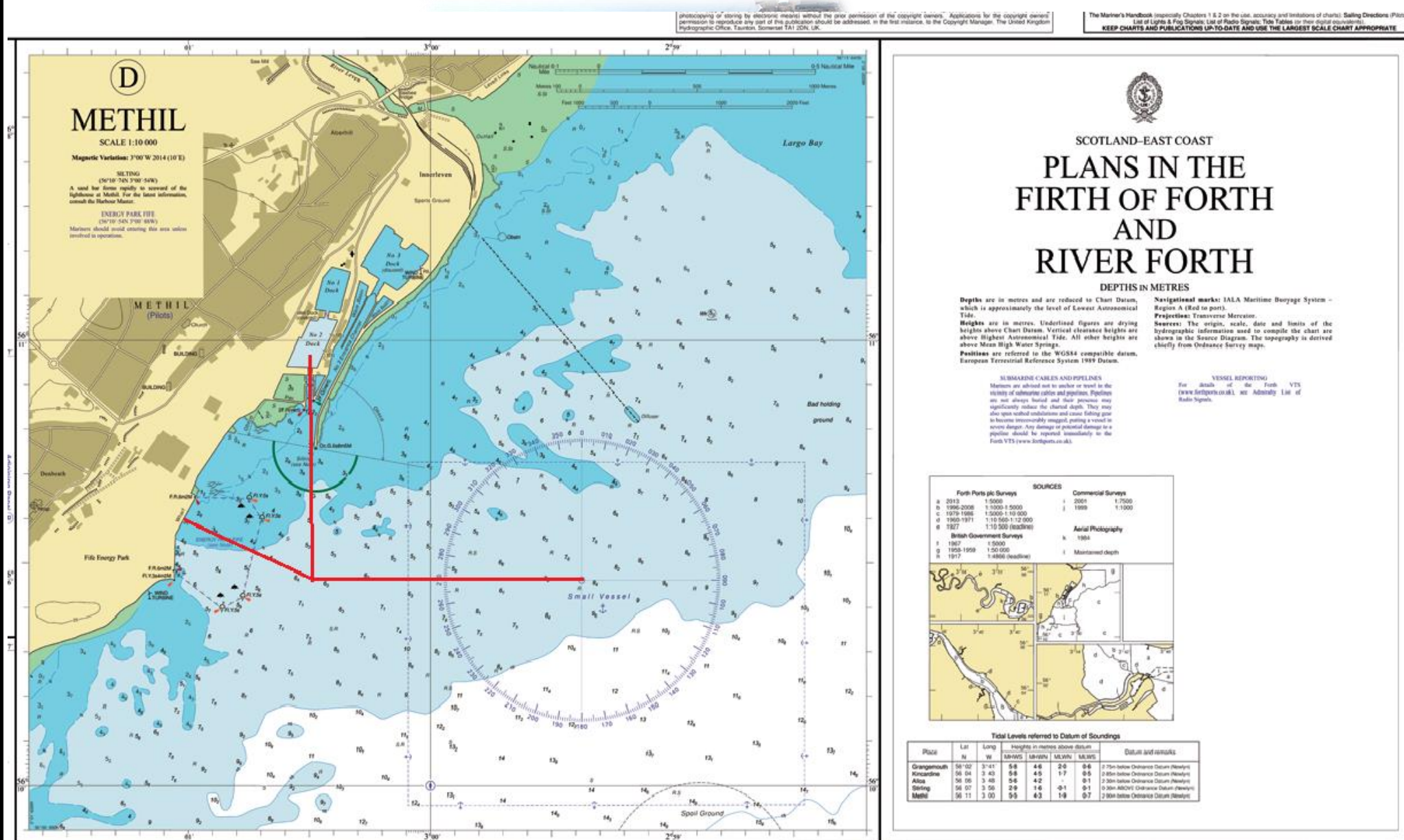
736

NOT FOR NAVIGATIONAL USE.



Kirkcaldy

NOT FOR NAVIGATIONAL USE.



NOT FOR NAVIGATIONAL USE.

