

FORTH PORTS LIMITED

NtM No 28 of 2020

23rd July 2020

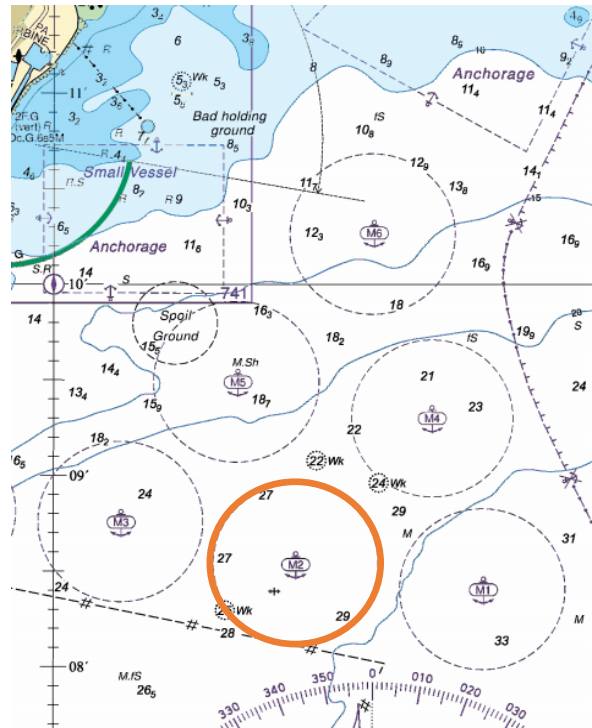
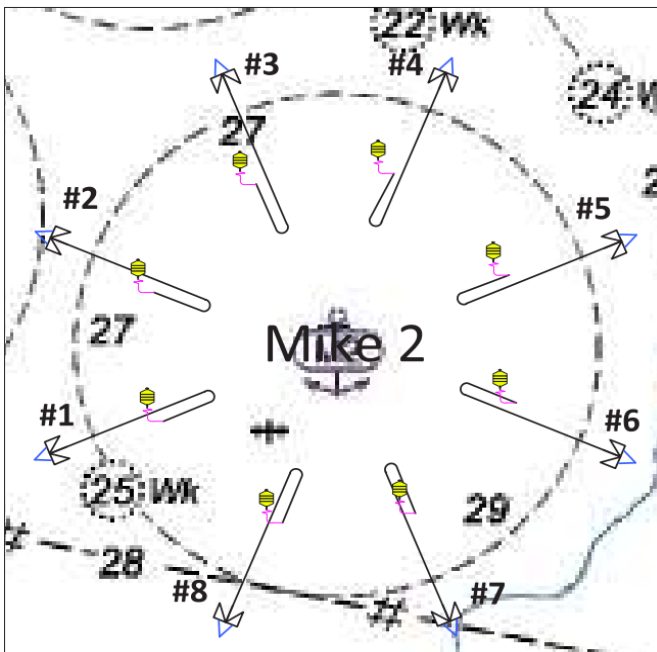
NOTICE TO MARINERS FIRTH OF FORTH

Anchor Positions M2 Anchorage

Mariners are advised that anchors have been pre laid in the below positions around the Mike 2 anchorage.

The anchors are marked with yellow, unlit surface buoys. These will be removed when the incoming rig is in position, current ETA 29th July 2020 – 8th August 2020.

Mariners are advised to navigate with caution in the vicinity of Mike 2 anchorage and not to anchor within Mike 2 anchorage itself.



Anchor number	ANCHOR COORDINATES					
	Range [m]	WGS 84 / UTM ZONE 30N		WGS 84 GEOGRAPHIC		Depth [m]
		Easting	Northing	Latitude	Longitude	
1	863.50	501448	6221594	56° 08' 21.82" N	002° 58' 36.12" W	27
2	863.50	501451	6222259	56° 08' 43.33" N	002° 58' 35.93" W	27
3	863.50	501961	6222770	56° 08' 59.85" N	002° 58' 06.37" W	27
4	863.50	502626	6222772	56° 08' 59.91" N	002° 57' 27.83" W	27
5	863.50	503150	6222248	56° 08' 42.95" N	002° 56' 57.49" W	27
6	863.50	503147	6221584	56° 08' 21.47" N	002° 56' 57.69" W	27
7	863.50	502637	6221073	56° 08' 04.95" N	002° 57' 27.26" W	27
8	863.50	501972	6221070	56° 08' 04.87" N	002° 58' 05.78" W	27

Nos 10, 24, 45 and 46 of 2019 remain in force

Nos 04, 07, 20, 21, 23, 25, 26 and 27 of 2020 remain in force.

Scott Cameron
Marine Manager