

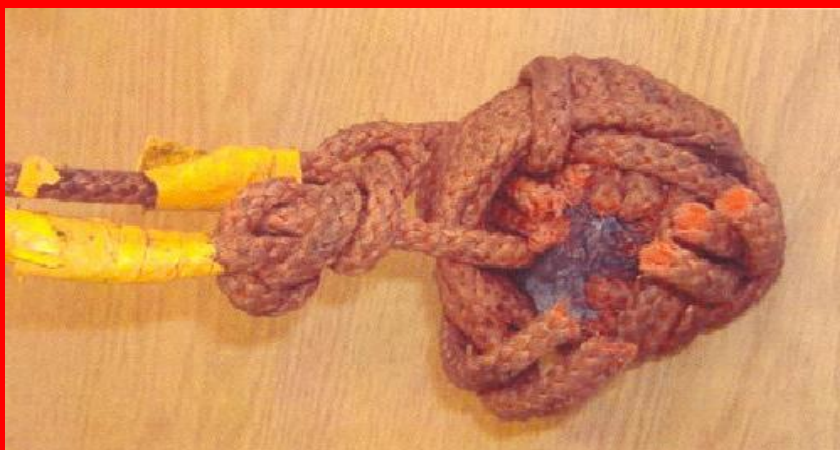
# Marine Safety Alert



Alert No: 005

Date: 28/10/13

## Inappropriately Weighted Heaving Lines



There have been an increased number of reports from both towage operators and lines handlers on the rivers Forth and Tay, regarding vessels using heaving lines weighted with inappropriate materials.

No associated injuries or damages have been reported however, the Harbour Authority wish to take this opportunity to raise awareness amongst river users regarding the use of inappropriately weighted heaving lines and the dangers associated with them.

The United Kingdom Maritime and Coastguard Agency (MCA) publication "Code of Safe Working Practices for Merchant Seamen", Section 25.3.2, states that "*Vessels heaving lines should be constructed with a "monkey's fist" at one end. To prevent personal injury, the fist should be made only with rope and should not contain added weighting materials*".

The use of heaving lines which are weighted with such materials will not be tolerated. If an inappropriately weighted heaving line is used, the linesmen or tug crew may cut off the monkey's fist or additional weighted parts before the heaving line is returned to the vessel.

Incidents of vessels using inappropriately weighted heaving lines should be reported to the Harbour Authority using a marine report form, and will be followed up by the Harbour Master.

Marine Report Forms can be found on the Forth Ports Website.

FORTH PORTS LIMITED	Document ID FP PMSC F21_01	Authorised By MM	Original Date June 2013
MARINE SAEFTY ALERT	Date Revised	Revised By	Review Due June 2015