

FORTH PORTS LIMITED

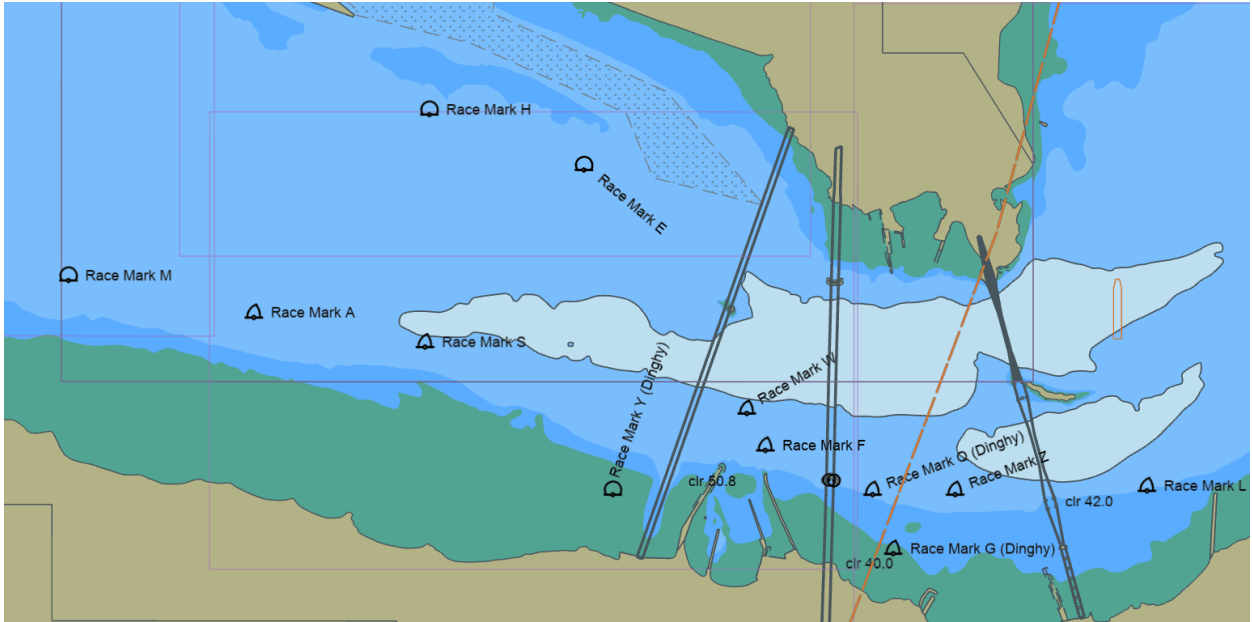
NtM No 25 of 2023

27th March 2022

NOTICE TO MARINERS

FIRTH OF FORTH

2023 Yacht Club Race Marks – Port Edgar Yacht Club



Reference: Admiralty Chart no. 735

The Port Edgar Yacht Club will be laying race marks off Hawes Pier, Longcraig Pier, S Queensferry Bay and Port Edgar Marina entrance from 28th March 2023. They will remain all year round. The below table shows descriptions and positions of the race marks, all race marks are clear of the main channels and anchorages

Mariners are implicitly asked to keep well clear of these marks.

Ref	PEYC 2023 - Race Mark Nominal Positions	Latitude			Longitude		
A	PEYC yellow conical race mark + flag	56	0.26	N	3	27.05	W
E	PEYC Yellow Spherical race mark	56	0.66	N	3	25.45	W
F	PEYC red conical race mark + flag	55	59.90	N	3	24.57	W
G (Dinghy)	PEYC yellow conical race mark	55	59.62	N	3	23.95	W
H	PEYC red spherical race mark	56	0.81	N	3	26.20	W
L	PEYC white conical race mark + flag	55	59.79	N	3	22.72	W
M	PEYC red spherical race mark	56	0.36	N	3	27.95	W
Q (Dinghy)	PEYC white conical race mark	55	59.78	N	3	24.05	W
S	PEYC red conical race mark + flag	56	0.18	N	3	26.22	W
W	PEYC yellow conical race mark + flag	56	0.00	N	3	24.66	W
Y (Dinghy)	PEYC red spherical race mark	55	59.79	N	3	25.31	W
Z	PEYC yellow conical race mark + flag	55	59.78	N	3	23.65	W

Status of Previously Published Notices:

No 10 of 2019 remains in force

No 04 of 2020 remains in force.

No 07, 14, 73 of 2021 remain in force

No 04, 21, 26, 28, 50, 55, 86, and 106 of 2022 remain in force

No 08, 09, 10 and 14 of 2023 remain in force

Colin Campbell

Marine Compliance Manager