

Ports of Tilbury and Tilbury2

NtM No 05 of 2023

31st August 2023

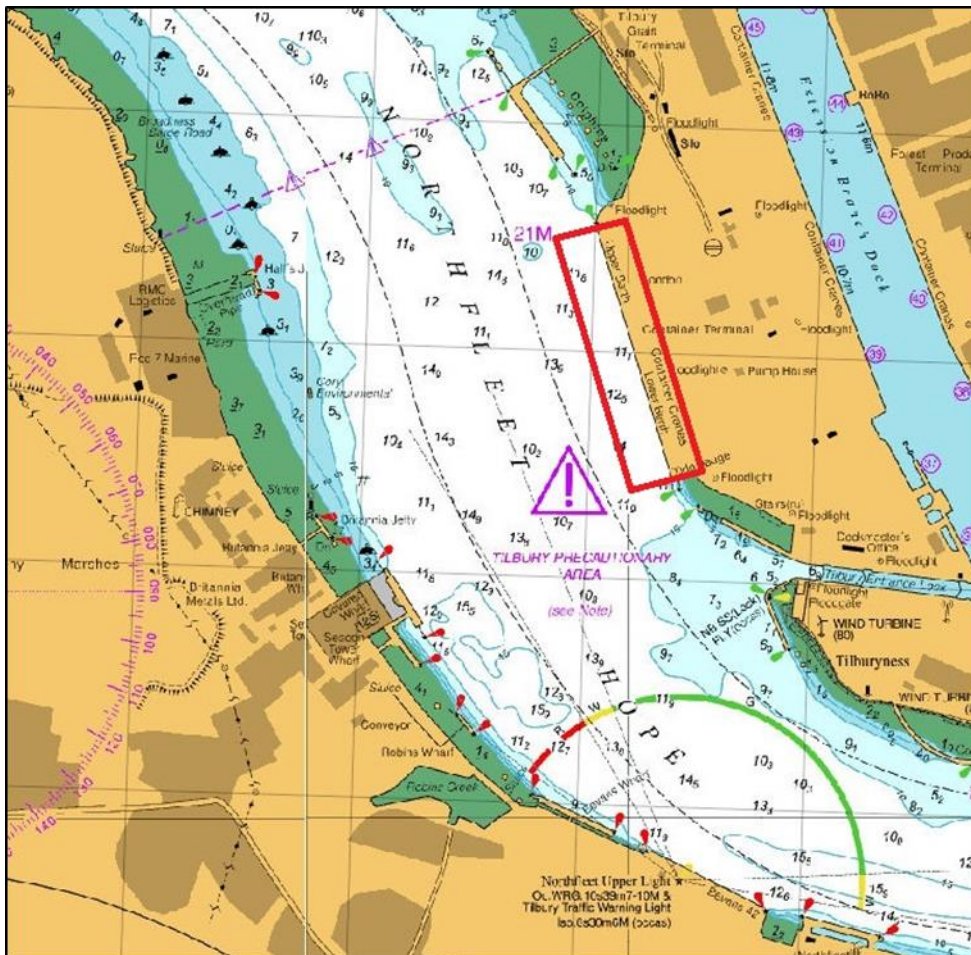
NOTICE TO MARINERS

Tilbury

Tilbury London Container Terminal Crane Maintenance

Mariners are advised that two cranes, at either extreme ends of the riverside London Container Terminal are in the boomed down position. Crane number 6 at the lower berth will remain boomed down until approx. 18th September and crane 11 at the upper berth will remain boomed down until approx. beginning of October. Crane 11 currently has an empty container stuck on the spreader frame with twist locks securely holding the container over the quayside. Marked exclusion zones at this area of quayside are in place.

Chartlet below shows location of LCT lower and upper berths;



All mariners are advised to navigate and manoeuvre with extreme caution in the vicinity of boomed down cranes.

No 03, 06 of 2013 remains in force
No 02 of 2014 remains in force
No 08, 16, 17, 19 of 2016 remains in force
No 22 of 2017 remains in force
No 03 of 2018 remains in force
No 09, 13, 22 of 2019 remains in force
No 08, 09 of 2020 remains in force
No 04, 05, 06 of 2021 remains in force.
No 04, 13 of 2022 remain in force
No 03 of 2023 remain in force

Issued by:

Emma Watt

Marine Asset Manager - Tilbury