

FORTH PORTS LIMITED

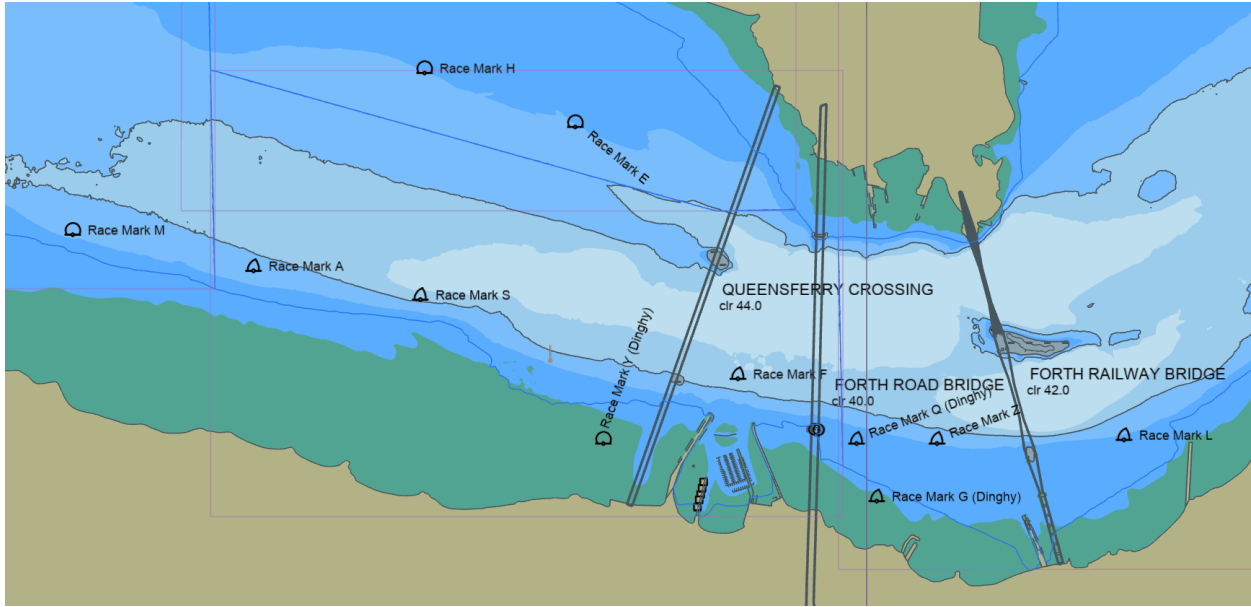
NtM No 25 of 2024

20th March 2024

NOTICE TO MARINERS

FIRTH OF FORTH

2024 Yacht Club Race Marks – Port Edgar Yacht Club



Reference: Admiralty Chart no. 735

The Port Edgar Yacht Club have laid race marks off Hawes Pier, Longcraig Pier, S Queensferry Bay and Port Edgar Marina entrance. They will remain in place until late December 2024. The below table shows descriptions and positions of the race marks, all race marks are clear of the main channels and anchorages

Mariners are implicitly asked to keep well clear of these marks.

| Ref | PEYC 2024 - Race Mark Nominal Positions | Latitude | | | Longitude | | |
|------------|---|----------|-------|---|-----------|-------|---|
| A | PEYC yellow conical race mark + yellow flag | 56 | 0.26 | N | 3 | 27.05 | W |
| E | PEYC Yellow Spherical race mark | 56 | 0.66 | N | 3 | 25.45 | W |
| F | PEYC red conical race mark + red flag | 55 | 59.96 | N | 3 | 24.64 | W |
| G (Dinghy) | PEYC yellow conical race mark | 55 | 59.62 | N | 3 | 23.95 | W |
| H | PEYC red spherical race mark | 56 | 0.81 | N | 3 | 26.20 | W |
| L | PEYC white conical race mark + white flag | 55 | 59.79 | N | 3 | 22.72 | W |
| M | PEYC red spherical race mark | 56 | 0.36 | N | 3 | 27.95 | W |
| Q (Dinghy) | PEYC red spherical race mark | 55 | 59.78 | N | 3 | 24.05 | W |
| S | PEYC red conical race mark + red flag | 56 | 0.18 | N | 3 | 26.22 | W |
| Y (Dinghy) | PEYC red spherical race mark | 55 | 59.79 | N | 3 | 25.31 | W |
| Z | PEYC yellow conical race mark + yellow flag | 55 | 59.78 | N | 3 | 23.65 | W |

Status of Previously Published Notices:

No 73 of 2021 remains in force

Nos 08, 09, 22 and 89 of 2023 remain in force

Nos 01, 11, 13, 17, 21, 23 and 24 of 2024 remain in force

Colin Campbell

Marine Compliance Manager